

## 3-Cylinder, Low-Pressure Diaphragm Pumps



ZETA 120 low pressure 3-cylinder diaphragm pumps have anodized aluminum bodies with plasticized aluminum heads, stainless steel valves and glass-filled nylon manifolds.

ZETA 120 pumps are excellent for various horticultural and agricultural spraying applications.

Pumps are available with a Universal VA drive face, 1-3/8" Male PTO shaft, 1-3/8" Male PTO x 25mm solid, keyed thru-shaft or gear reductions for 3/4" or 1" shaft gas engines.

Model	GPM	l/min	PSI	bar	RPM	Drive Configuration	Weight
ZETA 120 VA	31.0	116	300	20	550	Universal VA Drive Face.	45 LBS
ZETA 120 1C	31.0	116	300	20	550	1-3/8" 6-Spline Male PTO Shaft	45 LBS
ZETA 120 TS1C	31.0	116	300	20	550	1-3/8" 6-Spline Male PTO x 25mm Solid Keyed Thru-Shaft	45 LBS
ZETA 120 VAGR3/4	31.0	116	200	13.8	550	Gear Reduction for 3/4" Shaft Gas Engine, 4-6.5 HP	55 LBS
ZETA 120 VAGR1	31.0	116	300	20	550	Gear Reduction for 1" Shaft Gas Engine, 8-20 HP	55 LBS

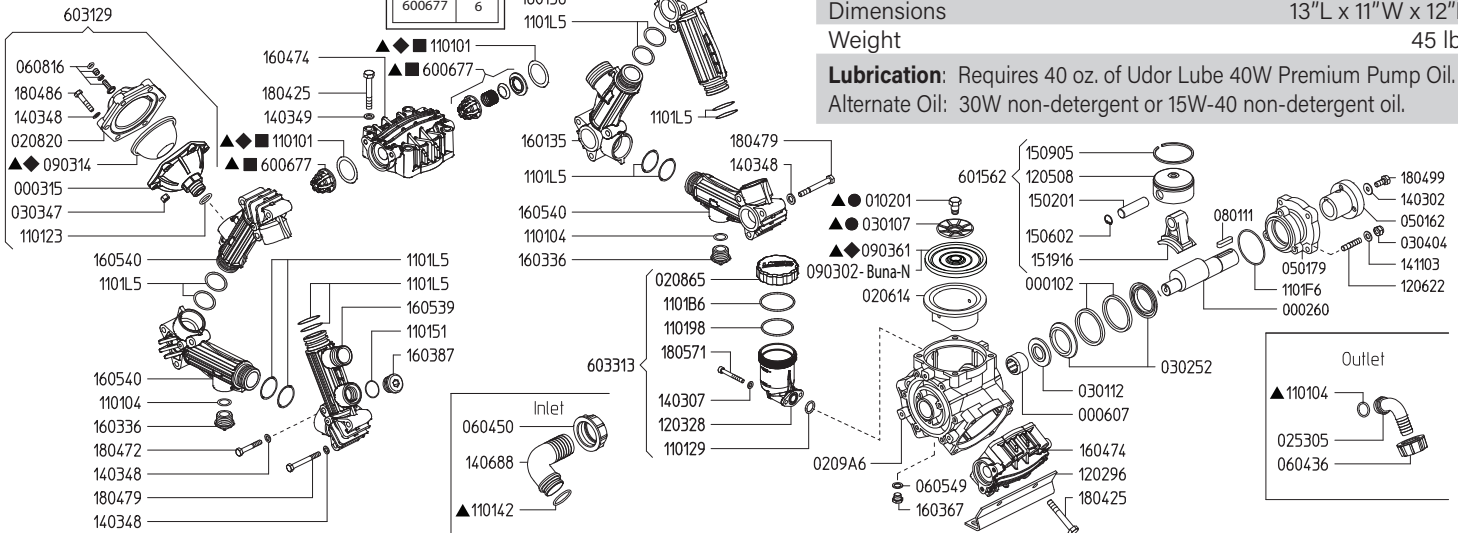
Specifications	ZETA 120	Description	Part #
Inlet Port	1-1/2" Hose Barb	Diaphragm Kit (GREENTECH)	6062.H2
Outlet Ports - Valve	3/4" Hose Barb	Diaphragm Bolt & Washer Kit	6062.16
Piston Diameter	55.0mm	Valve Kit	6062.D7
Crankshaft Stroke/Code	11.0mm / J	Complete Repair Kit	8700.04CK
Dims. - Pump Only	12.5"L x 13.5"W x 12.5"H		

**Lubrication:** Requires 40 oz. of Udor Lube 40W Premium Pump Oil.  
Alternate Oil: 30W non-detergent or 15W-40 non-detergent oil.

606216 KIT 515		6062D7 KIT 640		6062H2 KIT 670		8700.04CK	
CODE	QTY	CODE	QTY	CODE	QTY	CODE	QTY
010201	3	110101	6	090314	1	010201	3
030107	3	600677	6	090361	3	030107	1
				110101	6	090631	3
				110104	6	110101	6
				110104	1	110104	1
				110142	1	110142	1
				600677	6	600677	6

Maximum Flow	31.0 GPM / 116 lpm
Maximum Pressure	300 PSI / 20 bar
Maximum RPM	550 RPM
Inlet Port - Hose Barb	1-1/2" HB
Outlet Port - Hose Barb	3/4" HB
Bypass - Hose Barb	-
Dimensions	13"L x 11"W x 12"H
Weight	45 lbs

**Lubrication:** Requires 40 oz. of Udor Lube 40W Premium Pump Oil.  
Alternate Oil: 30W non-detergent or 15W-40 non-detergent oil.

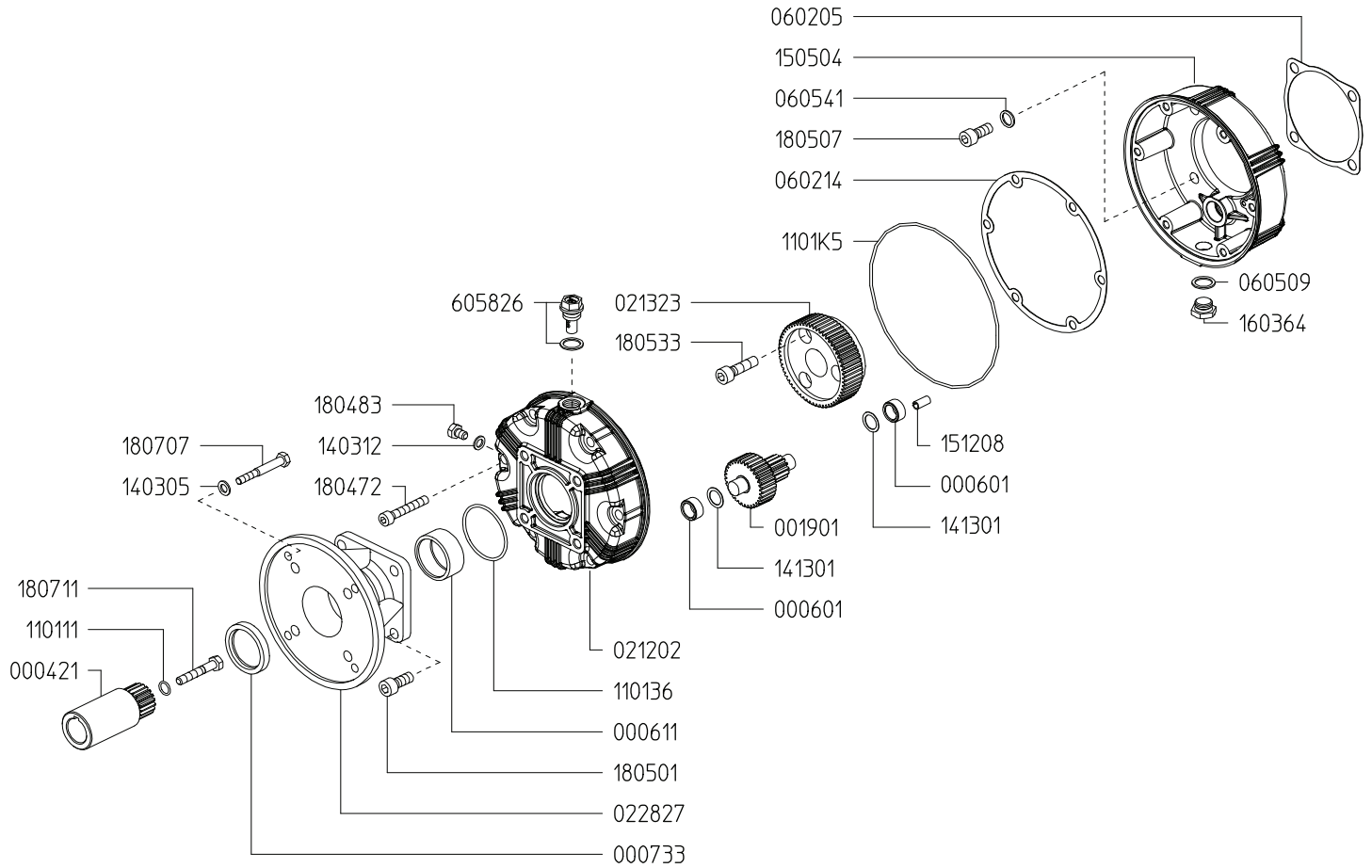


Revised 2-10-2025

Part #	Description	Qty	Part #	Description	Qty
0001.02	RETAINER RING	2	1403.02	WASHER M10	1
0002.60	CRANKSHAFT	1	1403.07	WASHER M6	2
0003.15	ACCUMULATOR BASE	1	1403.48	WASHER M8	24
0006.07	BEARING D25	1	1403.49	WASHER M10	8
0102.01	DIAPHRAGM BOLT ●▲	3	1406.88	HOSE BARB - SUCTION 1-1/2"	1
0206.14	SLEEVE D75	3	1411.03	SERATED WASHER M10	4
0208.20	ACCUMULATOR COVER	1	1502.01	PIN D18X64	3
0208.65	OIL RESERVIOR CAP	1	1506.02	SNAP RING D18	3
0209.A6	CRANKCASE	1	1509.05	PISTON RING D75	3
0253.05	HOSE BARB D20	1	1519.16	CONNECTING ROD	3
0301.07	DIAPHRAGM WASHER ●▲	3	1601.35	SUCTION MANIFOLD G1"1/2 M	1
0301.12	BEARING DISC - D25	1	1601.36	INLET-OUTLET MANIFOLD	1
0302.52	ROD SPACER	2	1603.36	PLUG G3/4	2
0303.47	HEX NUT M8X8	6	1603.67	PLUG G1/4	1
0304.04	NYLOCK NUT M10	4	1603.87	PLUG G3/4	1
0501.62	ADAPTER - VA	1	1604.74	HEAD	3
0501.79	FLANGE - VA	1	1605.39	MANIFOLD G1" M - G3/4 F	1
0604.36	BARB NUT G1"	1	1605.40	INLET-OUTLET MANIFOLD G3/4 F	3
0604.50	BARB NUT G1-1/2"	1	1804.25	HEX BOLT M10X75	12
0605.49	OIL PLUG GASKET	1	1804.72	HEX BOLT M8X50	6
0608.16	AIR VALVE ASSEMBLY	1	1804.79	HEX BOLT M8X70	12
0801.11	KEY A10X8X40	1	1804.86	HEX BOLT M8X40	6
0903.14	ACCUMULATOR DIAPHRAGM ◆▲	1	1804.99	HEX BOLT M10X25	1
0903.61	PISTON DIAPHRAGM - GREENTECH ◆▲	3	1805.71	ALLEN BOLT M6X50	2
1101.01	O-RING - VALVE ■◆▲	6	6006.77	VALVE ASSEMBLY W/O O-RING ■▲	6
1101.04	O-RING - DISCHARGE BARB	3	6015.62	ROD ASSEMBLY - D75 PISTON	3
1101.23	O-RING - ACCUMULATOR	1	6031.29	ACCUMULATOR ASSEMBLY	1
1101.29	O-RING - OIL RESERVIOR	1	6033.13	OIL RESERVOIR ASSEMBLY	1
1101.42	O-RING - INLET BARB	1	6062.16	DIAPHRAGM BOLT & WASHER (KIT 515)	1
1101.51	O-RING - PLUG	1	6062.D7	IN/OUTLET VALVE KIT (KIT 640)	1
1101.98	O-RING - OIL RESERVIOR	1	6062.H2	DIAPHRAGM KIT - GREENTECH (KIT 670)	1
1101.B6	O-RING - OIL RESERVIOR	1	8700.04CK	COMPLETE REPAIR KIT	1
1101.F6	O-RING - FLANGE	1			
1101.L5	O-RING - MANIFOLD TUBES	12			
1202.96	RAIL	2			
1203.28	OIL RESERVIOR	1			
1205.08	ALUMINIUM PISTON D75	3			
1206.22	STUD M10X46	4			

- Parts in 6062.16 (Kit 515)
- Parts in 6062.D7 (Kit 640)
- ◆ Parts in 6062.H2 (Kit 670)
- ▲ Parts in 8700.04CK

**GAS ENGINE GEAR REDUCTION FOR  
KAPPA-55/75, DELTA-75, ZETA-120 DIAPHRAGM PUMPS  
on GAS ENGINES with 1" SHAFTS  
REQUIRES 17.25 OZ. 90W GEAR LUBE**



Revised 2-10-2025

Part #	Description	Qty	Part #	Description	Qty
0004.21	GEAR SHAFT "S164-1"	1	1403.05	WASHER D8.4	4
0006.01	BUSHING D15	2	1403.12	GASKET D8.5	1
0006.11	BUSHING D40	1	1413.01	WASHER D15	2
0007.33	OIL SEAL D40	1	1505.04	GEAR BODY "S164"	1
0019.01	GEAR SHAFT "S164"	1	1512.08	PLUG D4X16	1
0212.02	REDUCER COVER "S164"	1	1603.64	PLUG G3/8	1
0213.23	RED. GEAR WHEEL Z=60 "S164"	1	1804.72	HEX BOLT M8X50	6
0228.27	COUPLER "S164-VA"	1	1804.83	HEX BOLT M8X12	1
0602.05	GASKET	1	1805.01	ALLEN BOLT M10X25	4
0602.14	GASKET "S164"	1	1805.07	ALLEN BOLT M10X40	4
0605.09	GASKET D17	1	1805.33	ALLEN BOLT M10X35	3
0605.41	GASKET D10	4	1807.07	HEX BOLT 5/16-24X1" UNF	4
1101.11	O-RING - GEAR SHAFT	1	1807.11	HEX BOLT 7/16-20X2" UNF	1
1101.36	O-RING - BUSHING	1	6058.26	OIL PLUG G3/8	1
1101.K5	O-RING - GEAR CASE	1			



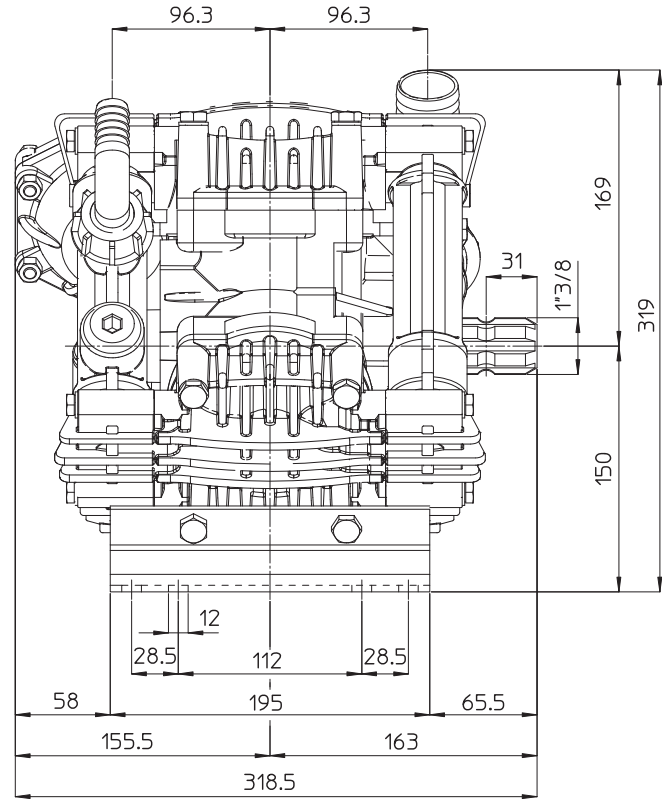
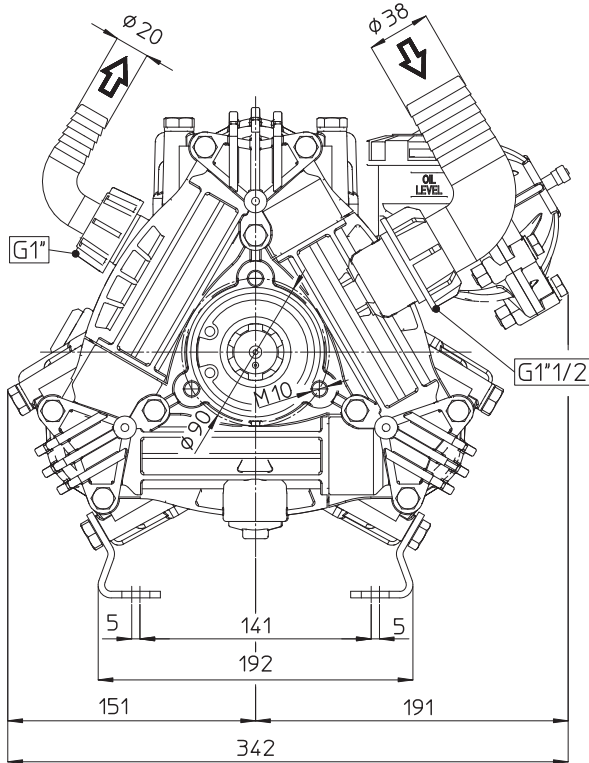
# ZETA 120/140 DIMENSIONS

All Dimensions are WITHOUT Control Unit or Regulator

Dimensional Drawings are Shown in Millimeters. To Convert to Inches, Multiply Dimension x 0.03937

Specifications	ZETA 120	ZETA 140
Inlet Port - Hose Barb	1-1/2" HB	1-1/2" HB
Outlet Ports - Hose Barb	3/4" HB	3/4" HB
Dimensions - Pump Only	12.5"L x 13.5"W x 12.5"H	
Diaphragm Material	GREENTECH (Std) Buna-N (Opt)	

**Lubrication:** Requires 39 oz. of Udor Lube 40W Premium Pump Oil. Alternate Oil: 30W non-detergent or 15W-40 non-detergent oil.



## TORQUE SPECS

Ref.	Description	Ft./lb.	Nm
1	Diaphragm Bolts (Use Loctite 243)	22	30
2	Head Bolts	30	40
3	Pulsation Dampener Bolts	18	25
4	Oil Cup Bolts	6	8
5	Manifold Bolts (Plastic)	14	20

